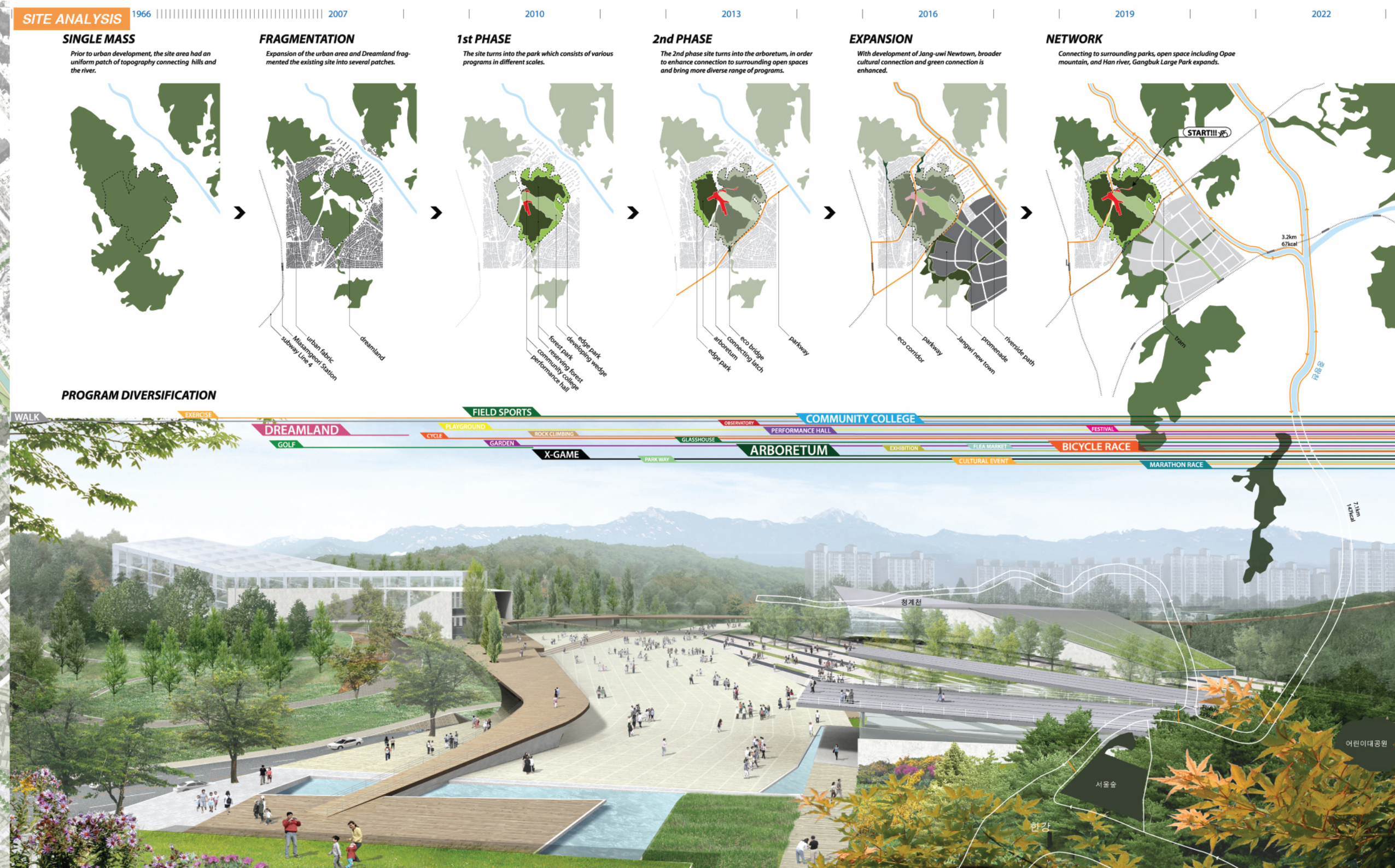


[Seoul Metropolitan Government, Seoul, South Korea] 2008 *1st* PROJECT

GROWING GANGBUK LARGE PARK

- w/ GAWON + SWA + Kim S (prof. of Korea University)
- Conducted Research/ Developed Design Concept / Made Graphic Images



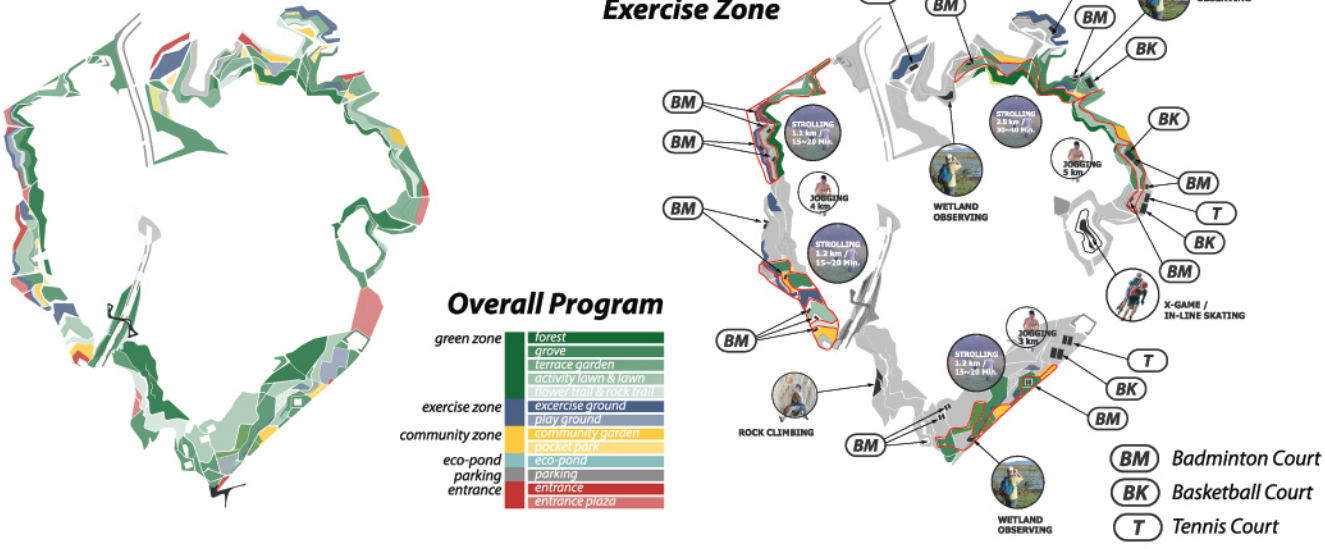


CONCEPT DIAGRAM

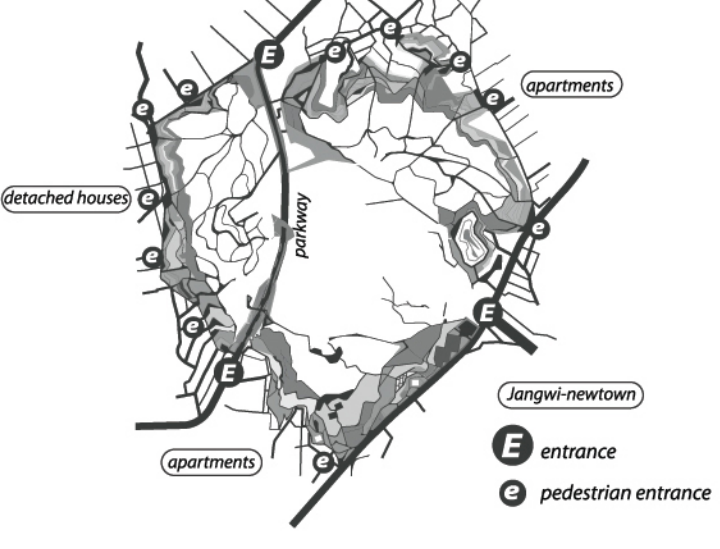


4 STRATEGIES: PARK'S FUNCION OF SCALE

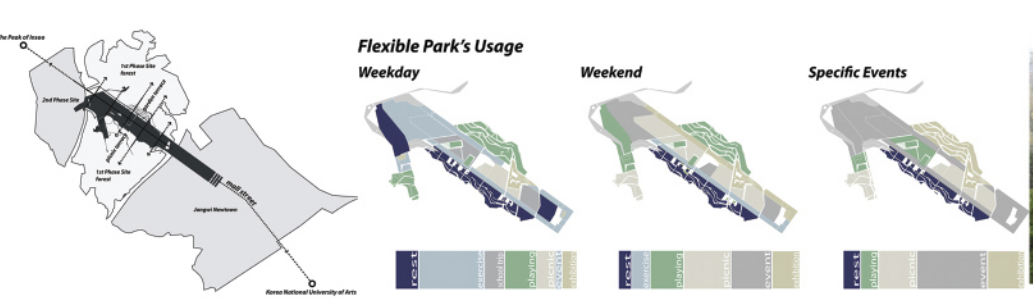
Making a neighborhood park



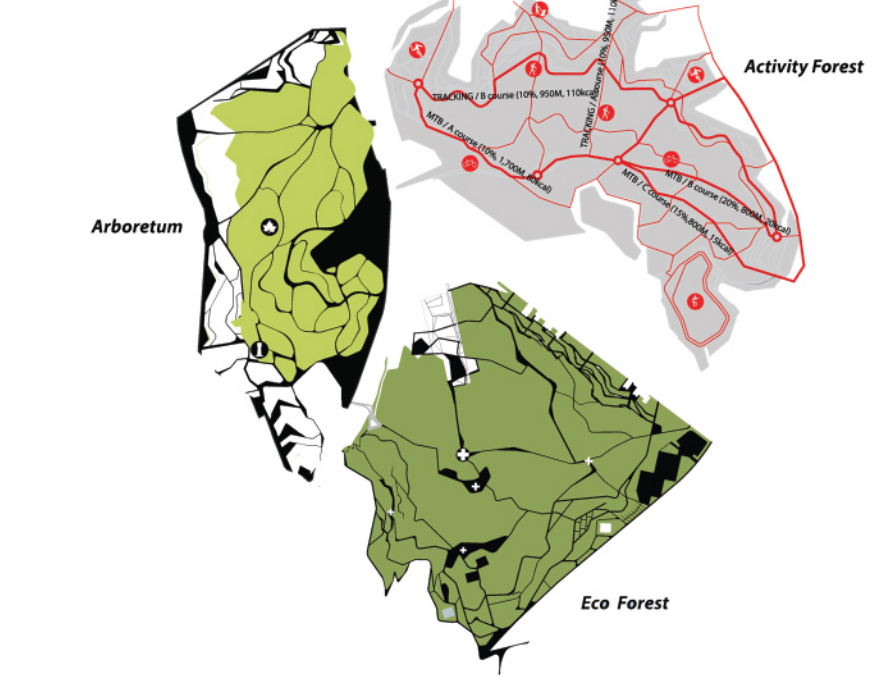
Park's Entrance



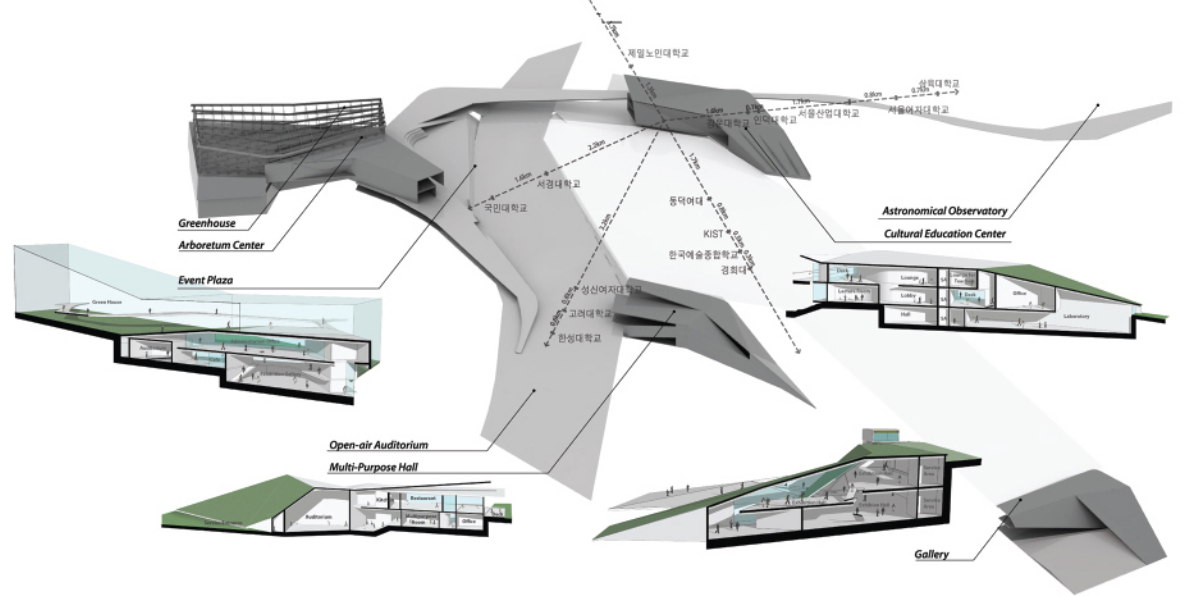
Making an open park



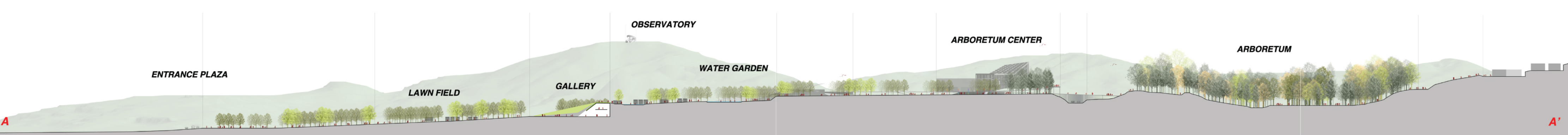
Making an urban scale attractor



지역문화 hub 만들기 Making a cultural hub



SECTION A-A'





View from Entrance Plaza toward Lawn Field

기존 드림랜드 부지 입구에서부터 전면에 걸쳐 넓게 조성되는 Lawn Field는 강북유일의 평지형 공원으로써의 강북대형공원의 성격을 강조한다. 입구광장은 경관축 역사가 위치하여 참위 뉴타운 역세권을 형성한다.

The grand lawn that occupies the most of the former Dreamland site emphasizes unique characteristic of Gangbuk Large Park as the only park in Northern Seoul, which has flat topography. The tram station connecting the park and Jangju Newtown closely is located at the entrance plaza.



View from Garden Terrace toward Gallery

드림랜드 중앙 지형에 관입된 gallery는 지역주민을 위한 다양한 소규모 전시를 담당하고 garden terrace는 각종 정원을 조성하고 야외조각을 전시한다.

The gallery inserted into the topography is the space for various small exhibitions for neighborhood communities. Garden terrace which consists of gardens is used as the outdoor sculpture exhibition space.



View from Picnic Terrace toward Water Garden

옛 드림랜드 부지의 수영장은 water garden으로 조성하고, Lawn field와의 경계부는 지형을 활용하여 picnic을 위한 terrace로 조성한다. 그 앞으로 관리시설, 편의시설, 카페테리아 등을 배치하고 그 지붕은 picnic terrace와 연결된다.

The former outdoor pool is transformed into the water garden. The terraced picnic area is built at the edge area of the lawn. In front of the terraces, maintenance facilities, service facilities, and the cafeteria, whose building rooftop is connected to the picnic terrace, are proposed.

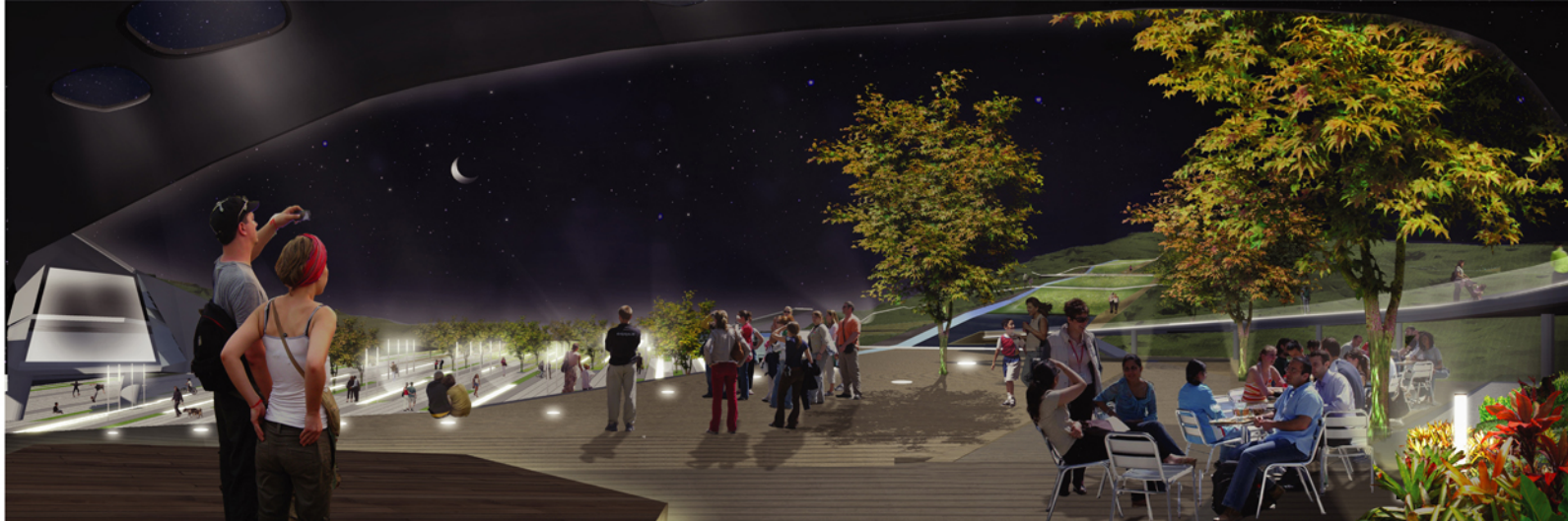
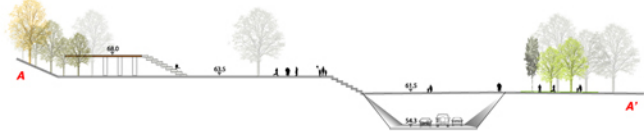




View from Arboretum Center toward The Plaza

다목적 홀, 수목문화원, 지역문화교육센터, 세 개의 건축물로 둘러싸인 Event Plaza는 다양한 이벤트를 지원하고 다양한 조경은 아카이브도 활발한 공원이용을 가능하도록 한다.

The event plaza surrounded by the cultural education center, the multipurpose hall, and the arboretum center supports various events. Well designed lightings installed in the plaza facilitate the diverse night activities.



View from Arboretum Center toward Arboretum

수목원과 수목문화원의 온실은 공원을 대표하는 도시적 유인시설로서 각종 식물에 대한 다양한 경험과 교육을 가능하게 한다. 수목문화원에는 레스토랑 및 전문서적코너를 도입하도록 한다.

The arboretum and the green house of the arboretum center, which are the main urban attractor of the park, provides various experience and knowledge related with plants. A restaurant and a bookstore are introduced in the arboretum center.



View from Activity Forest toward Neighborhood Park

공원의 가장자리에는 공원 주변 주민들을 위한 각종 운동시설, 및발, community 정원 등을 조성하여 생활권 공원의 역할을 담당한다. 생활권 공원은 또한 도시경계부에서 훼손되기 쉬운 공원 내부의 숲을 보호하는 역할을 한다.

Various neighborhood park programs, such as sports fields, resting places, and community gardens, will be located at the edge of the park. The neighborhood park also protects the inner forest from intense urban activities which happens at the urban edge.

